

Master-PUR STEP

Article Master No.: 000396

PU Film Hose, crush-resistant, hardly inflammable acc. to DIN 4102 B1



flame
retardant



transparen
t



crush-
proof



very
flexible



light



moderatel
y pressure
resistant

Product Details

Construction / Material

- Type of construction: film hose or fabric hose with attached support coil
- Execution of the wall: made of pure material, made of specified material, addition of flame retardant additives, wall thickness between the spirals approx. 0.5 mm
- Material of the wall: Polyester Polyurethane
- Specifications of the wall: material is more abrasion resistant than comparable polyurethane according to DIN ISO 4649, flame retardant according to DIN 4102 B1
- Design of the profile coil: made of plastic as a special hose (strand) and inserted into the helix
- Design of the stranded wire: made of flame retardant material
- Material of the stranded wire: Polyurethane

Properties

- Specifications of the product: complies with the requirements of the Holz-BG, BGI 739-2, according to TRGS 727 and ATEX 2014/34 EU
- Chemical Properties: good resistance to chemicals, good UV resistance, good resistance to oil, good resistance to petrol
- Flexibility: very flexible
- Weight: light
- Pressure Resistance: moderately pressure resistant

- Colour: tubing wall transparent with blue spiral
- Other: good recovery properties

Operating Temperature

- Temperature Range: -40 - 90
- short-term maximum temperature: peaks to 125 °C

Delivery Information

- Delivery, type of production: various nominal widths in standard lengths are available ex-production, individual nominal widths and lengths also ex-stock

Application Areas

- Areas of application: Plant & Mechanical Engineering, Industry, Aerospace technology, Ventilation & Air-conditioning, Sea & Rail transport, Wood, Plastics, Conveying, lifting & feeding technology, Textile, Metal & Toolmaking

Customizing Options

- optional item modification (on request): other colours, other lengths, other nominal widths, with customer-specific imprint

Article Variants

Extended Article Number	Article number	Nominal Size (DN) mm	Outer diameter mm	Bending radius* mm	Weight kg/m	Operating pressure bar	Negative pressure bar	Max. Production length m	Stock Lengths m
000396:38:x	000396	38	64	48	0,37	0,80	0,21	25,00	10, 15
000396:51:x	000396	51	68	50	0,39	0,78	0,20	25,00	5, 10, 15
000396:60:x	000396	60	80	65	0,45	0,76	0,19	25,00	5, 10
000396:76:x	000396	76	95	75	0,61	0,61	0,13	25,00	/
000396:80:x	000396	80	100	80	0,65	0,53	0,13	25,00	5, 10, 20
000396:102:x	000396	102	120	100	0,80	0,46	0,09	25,00	5, 10
000396:120:x	000396	120	140	120	0,95	0,38	0,09	25,00	5, 10
000396:140:x	000396	140	160	140	1,15	0,30	0,06	25,00	/
000396:152:x	000396	152	170	150	1,20	0,30	0,06	25,00	/
000396:160:x	000396	160	180	160	1,30	0,30	0,06	25,00	/

All data refer to a medium and ambient temperature of +20°C.
 Specification of the bending radius related to the inside of the hose bend
 Subject to technical changes and colour deviations

Delivery Variants

Available in other lengths, other nominal diameters, with customer-specific customer-specific imprint.

Disposal instructions

After use, the product must be disposed of in accordance with the legal regulations applicable in the user's region (in Germany in accordance with the applicable Waste Catalogue Ordinance (AVV)).

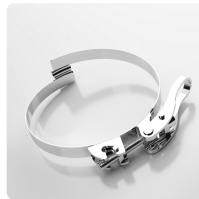
Possible Connection Elements



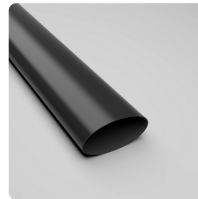
Car-Grip Hose Clamp, screwable
special clamp for attaching Carflex Super and Master-PUR STEP hoses to mobile and stationary systems



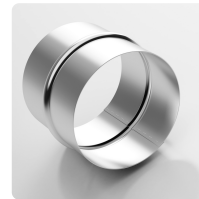
Car-Grip Hose Clamp, screwable, Steel quality W4, stainless steel 1.4301
special clamp for attaching Carflex Super and Master-PUR STEP hoses to mobile and stationary systems



Car-Grip Quick-Fix Clamp
Special clamp for attaching Carflex Super and Master-PUR STEP hoses to mobile and stationary installations



Heat Shrink Cuff
Heat shrink sleeve for easy connection and sealing of hoses



Hose connector
Sheet steel connector for extending, connecting and joining light to medium-weight hoses

Individual consultation

We offer consultation by phone:
+49 209 97077-112

Product requests via
[masterflex.de/en](https://www.masterflex.de/en)

Address Headquarters

Masterflex SE
Willy-Brandt-Allee 300
45981 Gelsenkirchen

