

## Master-PUR L Food

Article Master No.: 000012

PU Suction & Transport Hose, light duty, food-grade quality acc. to EU 10/2011 and FDA



hydrolysis resistant



food approved



microbe resistant



transparent



flexible



light



moderately pressure resistant

### Product Details

#### Construction / Material

- Type of construction: profile extruded hose with metal spiral
- Spiral Design: made from stainless steel wire
- Material of the spiral: stainless steel 1.4310, spring steel
- Execution of the wall: made of pure material, made of specified material, wall thickness between the spirals approx. 0.7 mm
- Material of the wall: Polyether Polyurethane
- Specifications of the wall: material complies with food regulations FDA 21 CFR § 177.2600 - 21 CFR § 178.2010, approved for direct food contact of categories A, B, C, D1, D2, E, according to EU Directive 1935/2004, 10/2011 and its latest amending Directives

#### Properties

- Specifications of the product: according to TRGS 727 and ATEX 2014/34 EU, with grounding on both sides of the spiral for aspirative and pneumatic conveying of non-flammable dusts and bulk materials in zone 22. For conveying gases and liquids with low conductivity in zone 2., manufacturing process according to GMP EC 2023/2006
- Chemical Properties: microbe-resistant, odourless and tasteless, good UV resistance, halogen-free, good resistance to chemicals, good ozone resistance, hydrolysis resistant, plasticiser-free
- Flexibility: flexible
- Weight: light

- Pressure Resistance: moderately pressure resistant
- Colour: transparent

### Operating Temperature

- Temperature Range: -40 - 90
- short-term maximum temperature: peaks to 125 °C

### Delivery Information

- Delivery, type of production: various nominal widths in standard lengths are available ex-production, individual nominal widths and lengths also ex-stock

### Application Areas

- Areas of application: Agriculture, Bulk & Construction, Chemistry, Food & Pharma, Plastics

### Customizing Options

- optional item modification (on request): other lengths, other nominal widths, with customer-specific imprint

## Article Variants

Extended Article Number	Article number	Nominal Size (DN) mm	Outer diameter mm	Bending radius* mm	Weight kg/m	Operating pressure bar	Negative pressure bar	Max. Production length m	Stock Lengths m
000012:32:x	000012	32	40	40	0.35	2.52	0.71	25.00	5, 10
000012:38:x	000012	38	46	46	0.39	2.10	0.66	25.00	5, 10
000012:40:x	000012	40	48	48	0.40	2.10	0.66	25.00	5, 10
000012:45:x	000012	45	53	53	0.44	1.84	0.59	25.00	/
000012:51:x	000012	51	58	58	0.45	1.68	0.52	25.00	5, 10
000012:55:x	000012	55	63	63	0.54	1.54	0.44	25.00	/
000012:60:x	000012	60	68	68	0.53	1.40	0.44	25.00	5, 10
000012:65:x	000012	65	73	75	0.64	1.26	0.37	25.00	5, 10
000012:70:x	000012	70	78	80	0.68	1.12	0.37	25.00	5, 10
000012:76:x	000012	76	84	85	0.72	1.12	0.29	25.00	5, 10
000012:80:x	000012	80	88	90	0.76	0.98	0.29	25.00	5, 10
000012:90:x	000012	90	99	99	0.88	0.84	0.22	25.00	/
000012:102:x	000012	102	110	110	0.95	0.84	0.22	25.00	5, 10
000012:110:x	000012	110	119	119	1.23	0.70	0.22	25.00	/
000012:115:x	000012	115	124	124	1.28	0.70	0.22	25.00	/
000012:120:x	000012	120	129	130	1.12	0.70	0.22	25.00	/
000012:127:x	000012	127	135	135	1.18	0.70	0.22	25.00	5, 10
000012:130:x	000012	130	140	141	1.20	0.56	0.22	25.00	/
000012:140:x	000012	140	150	153	1.38	0.56	0.15	25.00	/
000012:152:x	000012	152	161	165	1.48	0.56	0.15	25.00	5, 10
000012:160:x	000012	160	170	170	1.74	0.56	0.15	25.00	/
000012:175:x	000012	175	185	185	1.85	0.42	0.15	25.00	/
000012:180:x	000012	180	190	190	1.90	0.42	0.15	25.00	/
000012:203:x	000012	203	214	215	2.30	0.42	0.15	25.00	5, 10
000012:225:x	000012	225	235	235	2.55	0.28	0.07	25.00	/

Extended Article Number	Article number	Nominal Size (DN) mm	Outer diameter mm	Bending radius* mm	Weight kg/m	Operating pressure bar	Negative pressure bar	Max. Production length m	Stock Lengths m
000012:250:x	000012	250	261	262	2.90	0.40	0.13	25.00	/
000012:254:x	#NV	254	265	266	2.95	0.40	0.13	25.00	/
000012:300:x	000012	300	311	312	3.50	0.40	0.13	25.00	/
000012:305:x	#NV	305	316	317	3.55	0.40	0.13	25.00	/

All data refer to a medium and ambient temperature of +20°C.  
 Specification of the bending radius related to the inside of the hose bend  
 Subject to technical changes and colour deviations

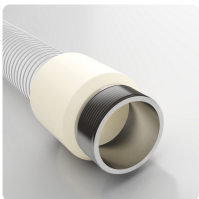
## Delivery Variants

Available in other lengths, other nominal diameters, with customer-specific customer-specific imprint.

## Disposal instructions

After use, the product must be disposed of in accordance with the legal regulations applicable in the user's region (in Germany in accordance with the applicable Waste Catalogue Ordinance (AVV)).

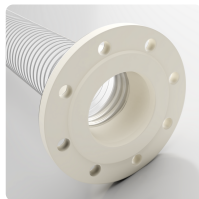
## Possible Connection Elements



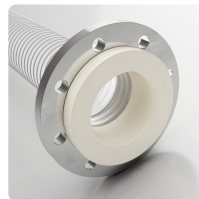
**Combiflex VA Threaded Sockets Food**  
 cast-on VA threaded socket with male thread to DIN ISO 228 for all Master-PUR Food hoses, food-safe EU 10/2011



**Master-Grip Double Wire Clamp, screw-fitting**  
 Special clamp for fastening light and medium-weight, right-handed spiral hoses such as Flamex B-se, Flamex B-F se, Master-PUR Trivolution, Master-PUR Food, Master-PVC and Master-SANTO



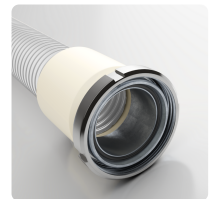
**Combiflex Cast-on PU Fixed Flange Food**  
 fixed flange for all Master-PUR Food hose types, approved for direct food contact EU 10/2011, for counterflanges acc. to DIN 2632 / DIN 2633 / DIN 2673



**Combiflex PU Swivel Flange Food**  
 fixed PU flange for all Master-PUR Food hose types, approved for direct food contact EU 10/2011, for counterflanges acc. to DIN 2632 / DIN 2633 / DIN 2673



**Combiflex PU Threaded Sockets Food**  
 cast-on PU threaded connector for attaching fittings to Master-PUR Food hoses, approved for direct food contact EU 10/2011, following DIN ISO 228



**Combiflex Dairy Fitting Cone Sockets**  
 cast-on tube fitting with groove nut to DIN 11851 for Master-PUR Food hoses, food-safe EU 10/2011

### Individual consultation

We offer consultation by phone:  
 +49 209 97077-112

Product requests via  
[masterflex.de/en](http://masterflex.de/en)

### Address Headquarters

Masterflex SE  
 Willy-Brandt-Allee 300  
 45981 Gelsenkirchen

