

## Master-PUR HX Food A

Article Master No.: 000157

PU suction & Transport Hose, heavy-duty, food-grade quality acc. to EU 10/2011 and FDA, permanently antistatic



antistatic



hydrolysis resistant



food approved



microbe resistant



transparent



moderately flexible



heavy



very pressure resistant

### Product Details

#### Construction / Material

- Type of construction: profile extruded hose with metal spiral
- Spiral Design: made from stainless steel wire
- Material of the spiral: stainless steel 1.4310, spring steel
- Execution of the wall: made of pure material, made of specified material, extra reinforced wear zones, extremely abrasion resistant due to specific reinforcement underneath the spiral, addition of a non-migrating permanent antistatic agent, wall thickness between the spirals approx. 2.0 mm
- Material of the wall: Polyether Polyurethane
- Specifications of the wall: surface resistance  $R_0 < 10^9$  Ohm, measured according to DIN EN ISO 8031, material complies with food regulations FDA 21 CFR § 177.2600 and 21 CFR § 177.1680, approved for direct food contact category E, according to EU Directive 1935/2004, 10/2011 and its latest amending Directives

#### Properties

- Specifications of the product: according to TRGS 727 and ATEX 2014/34 EU, with grounding on both sides of the spiral for aspirative and pneumatic conveying of non-flammable dusts and bulk materials in zone 22. For conveying gases and liquids with low conductivity in zone 2., manufacturing process according to GMP EC 2023/2006
- Chemical Properties: microbe-resistant, odourless and tasteless, good UV resistance, halogen-free, good resistance to chemicals, good ozone resistance, hydrolysis resistant, plasticiser-free

- Flexibility: moderately flexible
- Physical Properties: permanently antistatic
- Weight: heavy
- Pressure Resistance: very pressure resistant
- Colour: transparent
- Other: high vacuum and good pressure resistance

### Operating Temperature

- Temperature Range: -40 - 90
- short-term maximum temperature: peaks to 125 °C

### Delivery Information

- Delivery, type of production: various nominal widths in standard lengths are available ex-production, individual nominal widths and lengths also ex-stock

### Application Areas

- Areas of application: Bulk & Construction, Chemistry, Food & Pharma, Plastics

### Customizing Options

- optional item modification (on request): other nominal widths, other colours, with customer-specific imprint

## Article Variants

| Extended Article Number | Article number | Nominal Size (DN) mm | Outer diameter mm | Bending radius* mm | Weight kg/m | Operating pressure bar | Negative pressure bar | Max. Production length m | Stock Lengths m |
|-------------------------|----------------|----------------------|-------------------|--------------------|-------------|------------------------|-----------------------|--------------------------|-----------------|
| 000157:32:x             | 000157         | 32                   | 42                | 80                 | 0.66        | 4.85                   | 0.94                  | 20.00                    | /               |
| 000157:40:x             | 000157         | 40                   | 50                | 100                | 0.83        | 4.27                   | 0.94                  | 20.00                    | /               |
| 000157:51:x             | 000157         | 51                   | 61                | 125                | 1.04        | 4.00                   | 0.94                  | 20.00                    | 5, 10           |
| 000157:55:x             | 000157         | 55                   | 65                | 140                | 1.10        | 3.75                   | 0.89                  | 20.00                    | /               |
| 000157:60:x             | 000157         | 60                   | 70                | 150                | 1.20        | 3.60                   | 0.89                  | 20.00                    | /               |
| 000157:65:x             | 000157         | 65                   | 75                | 165                | 1.29        | 3.30                   | 0.89                  | 20.00                    | /               |
| 000157:70:x             | 000157         | 70                   | 80                | 175                | 1.38        | 3.15                   | 0.89                  | 20.00                    | /               |
| 000157:76:x             | 000157         | 76                   | 87                | 190                | 1.61        | 2.92                   | 0.89                  | 20.00                    | 5, 10           |
| 000157:80:x             | 000157         | 80                   | 93                | 200                | 1.93        | 2.77                   | 0.89                  | 20.00                    | /               |
| 000157:90:x             | 000157         | 90                   | 103               | 225                | 2.16        | 2.40                   | 0.89                  | 20.00                    | /               |
| 000157:102:x            | 000157         | 102                  | 115               | 250                | 2.60        | 2.10                   | 0.87                  | 20.00                    | 5, 10           |
| 000157:110:x            | 000157         | 110                  | 124               | 275                | 2.82        | 1.95                   | 0.87                  | 20.00                    | /               |
| 000157:115:x            | 000157         | 115                  | 129               | 290                | 2.94        | 1.80                   | 0.87                  | 20.00                    | /               |
| 000157:120:x            | 000157         | 120                  | 134               | 300                | 3.07        | 1.65                   | 0.87                  | 20.00                    | /               |
| 000157:125:x            | 000157         | 125                  | 138               | 310                | 3.33        | 1.65                   | 0.87                  | 20.00                    | /               |
| 000157:127:x            | 000157         | 127                  | 140               | 315                | 3.44        | 1.65                   | 0.87                  | 20.00                    | /               |
| 000157:130:x            | 000157         | 130                  | 145               | 325                | 3.54        | 1.65                   | 0.84                  | 20.00                    | /               |
| 000157:150:x            | 000157         | 150                  | 165               | 433                | 4.08        | 1.50                   | 0.82                  | 20.00                    | /               |
| 000157:152:x            | 000157         | 152                  | 167               | 450                | 4.13        | 1.50                   | 0.82                  | 20.00                    | /               |

All data refer to a medium and ambient temperature of +20°C.  
 Specification of the bending radius related to the inside of the hose bend  
 Subject to technical changes and colour deviations

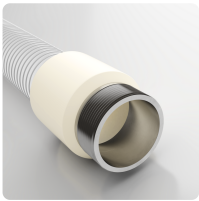
## Delivery Variants

Available in other lengths, other nominal diameters, with customer-specific customer-specific imprint.

## Disposal instructions

After use, the product must be disposed of in accordance with the legal regulations applicable in the user's region (in Germany in accordance with the applicable Waste Catalogue Ordinance (AVV)).

## Possible Connection Elements



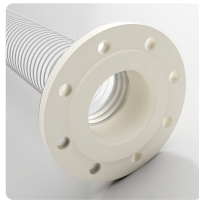
### Combiflex VA Threaded Sockets Food

cast-on VA threaded socket with male thread to DIN ISO 228 for all Master-PUR Food hoses, food-safe EU 10/2011



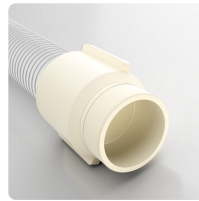
### Master-Grip Double Wire Clamp, screw-fitting

Special clamp for fastening light and medium-weight, right-handed spiral hoses such as Flamex B-se, Flamex B-F se, Master-PUR Trivolution, Master-PUR Food, Master-PVC and Master-SANTO



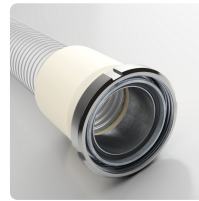
### Combiflex Cast-on PU Fixed Flange Food

fixed flange for all Master-PUR Food hose types, approved for direct food contact EU 10/2011, for counterflanges acc. to DIN 2632 / DIN 2633 / DIN 2673



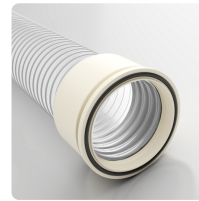
### Combiflex PU Threaded Sockets Food

cast-on PU threaded connector for attaching fittings to Master-PUR Food hoses, approved for direct food contact EU 10/2011, following DIN ISO 228



### Combiflex Dairy Fitting Cone Sockets

cast-on tube fitting with groove nut to DIN 11851 for Master-PUR Food hoses, food-safe EU 10/2011



### Combiflex PU Cone Flange Food

fixed quick connector system for all Master-PUR Food hose types, following DIN 3016, food-safe EU 10/2011

### Individual consultation

We offer consultation by phone:  
+49 209 97077-112

Product requests via  
[masterflex.de/en](http://masterflex.de/en)

### Address Headquarters

Masterflex SE  
Willy-Brandt-Allee 300  
45981 Gelsenkirchen

