

## Master-PUR HX EL

Article Master No.: 000159

PU Suction & Transport Hose, flexible, highly abrasion-proof and vacuum-proof, electroconductive



antistatic



electrically  
conductive



moderately  
flexible



heavy



very  
pressure  
resistant

### Product Details

#### Construction / Material

- Type of construction: profile extruded hose with metal spiral
- Spiral Design: made of steel wire
- Material of the spiral: spring steel
- Execution of the wall: made of electrically conductive material, made of specified material, extra reinforced wear zones, wall thickness between the spirals approx. 2.0 mm
- Material of the wall: Polyester Polyurethane
- Specifications of the wall: surface resistance  $R_0 < 10^3 \text{ Ohm}$

#### Properties

- Specifications of the product: complies with DIN 26057, according to TRGS 727 and ATEX 2014/34 EU
- Chemical Properties: good resistance to chemicals, good UV resistance, good resistance to oil, good resistance to petrol, good ozone resistance
- Flexibility: moderately flexible
- Weight: heavy
- Pressure Resistance: very pressure resistant
- Colour: black
- Other: high vacuum and peak pressure resistance

## Operating Temperature

- Temperature Range: -40 - 90
- short-term maximum temperature: peaks to 125 °C

## Delivery Information

- Delivery, type of production: various nominal widths in standard lengths are available ex-production, individual nominal widths and lengths also ex-stock

## Application Areas

- Areas of application: Surface Technology

## Customizing Options

- optional item modification (on request): other lengths, other nominal widths, with customer-specific imprint

## Article Variants

Extended Article Number	Article number	Nominal Size (DN) mm	Outer diameter mm	Bending radius* mm	Weight kg/m	Operating pressure bar	Negative pressure bar	Max. Production length m	Stock Lengths m
000159:32:x	000159	32	42	80	0.69	4.85	0.94	20.00	/
000159:38:x	000159	38	48	95	0.78	4.39	0.94	20.00	/
000159:40:x	000159	40	50	100	0.81	4.27	0.94	20.00	/
000159:45:x	000159	45	55	115	0.88	4.10	0.94	20.00	/
000159:51:x	000159	51	61	125	0.95	4.00	0.94	20.00	/
000159:55:x	000159	55	65	140	1.08	3.75	0.89	20.00	/
000159:60:x	000159	60	70	150	1.20	3.60	0.89	20.00	/
000159:65:x	000159	65	75	165	1.33	3.30	0.89	20.00	/
000159:70:x	000159	70	80	175	1.49	3.15	0.89	20.00	/
000159:76:x	000159	76	87	190	1.68	2.92	0.89	20.00	/
000159:80:x	000159	80	93	200	1.85	2.77	0.89	20.00	/
000159:90:x	000159	90	103	225	2.10	2.40	0.89	20.00	/
000159:102:x	000159	102	115	250	2.32	2.10	0.87	20.00	/
000159:110:x	000159	110	124	275	2.60	1.95	0.87	20.00	/
000159:115:x	000159	115	129	290	2.73	1.80	0.87	20.00	/
000159:120:x	000159	120	134	300	2.86	1.65	0.87	20.00	/
000159:127:x	000159	127	140	315	3.01	1.65	0.87	20.00	/
000159:130:x	000159	130	143	325	3.25	1.65	0.84	20.00	/
000159:140:x	000159	140	153	350	3.66	1.50	0.83	20.00	/
000159:152:x	000159	152	167	375	4.15	1.50	0.82	20.00	/
000159:160:x	000159	160	175	400	4.55	1.35	0.81	20.00	/
000159:170:x	000159	170	185	425	5.01	1.20	0.80	20.00	/
000159:180:x	000159	180	195	450	5.52	1.20	0.77	20.00	/
000159:203:x	000159	203	220	500	6.06	1.05	0.66	15.00	/
000159:225:x	000159	225	241	565	6.99	0.90	0.58	10.00	/
000159:250:x	000159	250	263	617	7.91	0.90	0.52	10.00	/
000159:254:x	000159	254	267	625	7.91	0.90	0.51	10.00	/
000159:275:x	000159	275	292	690	8.67	0.75	0.47	10.00	/

Extended Article Number	Article number	Nominal Size (DN) mm	Outer diameter mm	Bending radius* mm	Weight kg/m	Operating pressure bar	Negative pressure bar	Max. Production length m	Stock Lengths m
000159:300:x	000159	300	317	750	9.42	0.60	0.42	10.00	/

All data refer to a medium and ambient temperature of +20°C.  
 Specification of the bending radius related to the inside of the hose bend  
 Subject to technical changes and colour deviations

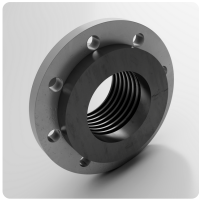
## Delivery Variants

Available in other lengths, other nominal diameters, with customer-specific customer-specific imprint.

## Disposal instructions

After use, the product must be disposed of in accordance with the legal regulations applicable in the user's region (in Germany in accordance with the applicable Waste Catalogue Ordinance (AVV)).

## Possible Connection Elements



### Combiflex PU Swivel Flange

screw-on plastic collar with loose flange for Master-PUR L, Master-PUR H, Master-PUR HX and Master-PUR Performance, for counterflanges acc. to DIN 2632 / DIN 2633 / DIN 2673



### Combiflex PU Cone Flange, screwable

screw-on quick connector system for all Master-PUR L, Master-PUR H and Master-PUR HX hose types, following DIN 3016

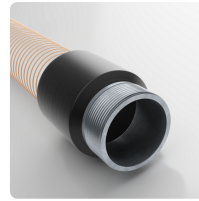


### Hose Clamp with Bolts

special clamp for fastening medium and heavy spiral hoses to connection pipes on mobile and stationary units

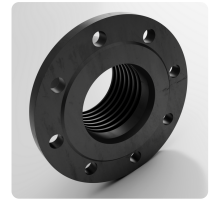


Hose Clamp with Bolts, Steel quality W4, stainless steel 1.4301  
 Special clamp for fastening medium and heavy spiral hoses to connection pipes on mobile and stationary units



### Combiflex Metal Threaded Sockets

Cast-on threaded connection with external thread according to DIN ISO 228



### Combiflex PU Fixed Flange

screw-on plastic flange for Master-PUR L, Master-PUR H, Master-PUR HX and Master-PUR Performance, for counterflanges according to DIN 2632 / DIN 2633 / DIN 2673

### Individual consultation

We offer consultation by phone:  
 +49 209 97077-112

Product requests via  
[masterflex.de/en](http://masterflex.de/en)

### Address Headquarters

Masterflex SE  
 Willy-Brandt-Allee 300  
 45981 Gelsenkirchen

